

4

3

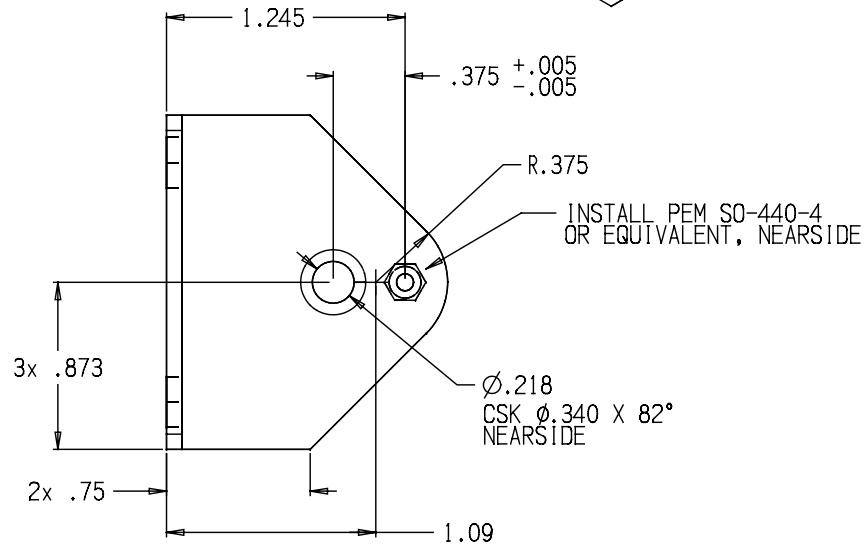
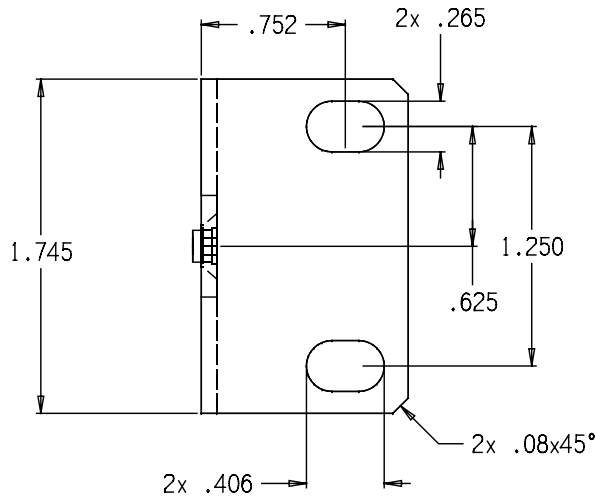
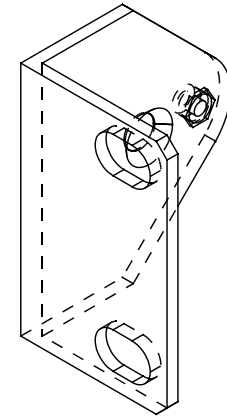
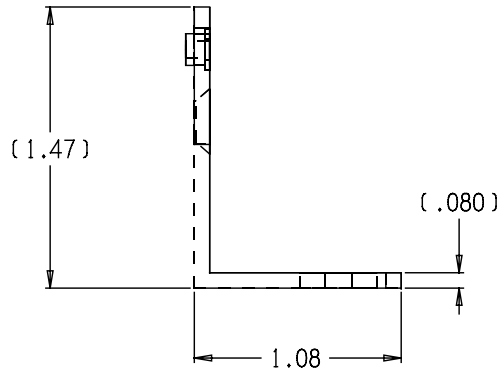
2

1

CAD GENERATED REFERENCE DRAWING.
MANUFACTURE USING CAD DATA.
REVISE CAD DATABASE ONLY.

THIS DRAWING CONTAINS INFORMATION PROPRIETARY TO NPI INC., AND IS INTENDED FOR DISTRIBUTION ONLY TO PERSONS OR ORGANIZATIONS HAVING A LEGITIMATE NEED FOR THE DRAWING. THIS DRAWING IS SUPPLIED FOR INFORMATION, IDENTIFICATION, ENGINEERING, EVALUATION AND/OR INSPECTION PURPOSES ONLY, AND MAY NOT BE USED AS A BASIS FOR THE MANUFACTURE OR SALE OF THE FURNISHING OF SERVICES TO NPI INC. OR TO ANY THIRD PARTY UNLESS AUTHORIZED IN WRITING BY NPI INC. THIS DRAWING IS PROTECTED UNDER THE COPYRIGHT LAW AS AN UNPUBLISHED WORK, AND MAY NOT BE PUBLISHED, OR COPIED OR REPRODUCED BY PERSONS OUTSIDE NPI INC. WITHOUT EXPRESS WRITTEN PERMISSION.

REV	DESCRIPTION OF CHANGE	DATE
2	SO-440-4 WAS TPS-125-6	07-07-03
-	--	-----



NOTES:

1. MATERIAL: ALUMINUM ALLOY, 5052-H32, .080 THK.
2. BREAK ALL EDGES .005-.015
3. FINISH: CHROMATE CONVERSION COATING CONFORMING TO MIL-C-5541, CL. 3, CLEAR

UNLESS OTHERWISE SPECIFIED DIMENSIONS ARE IN INCHES

TOLERANCES ARE:

.X	+/- 0.03
.XX	+/- 0.02
.XXX	+/- 0.010
ANGLES	+/- 1/2



4211 S.E. INT'L WAY
MILWAUKIE, OR 97222
TEL: (503) 652-6161
www.npi-inc.com

MATERIAL: SEE NOTES	FILE: \\SUN\NPI\DRAWING CONFIGURATION\PART DRAWINGS 6199\Rev 2	DESCRIPTION: BRACKET, MOUNTING	
FINISH: SEE NOTES	DRAWN BY: K.M. DATE: 08-19-02	SIZE: A SCALE: NONE	DWG. NO. 6199 USED ON: PB1506PFC PB1504PFC SHEET: 1 OF 1
		REV: 2	

4

3

2 DO NOT SCALE DRAWING

1